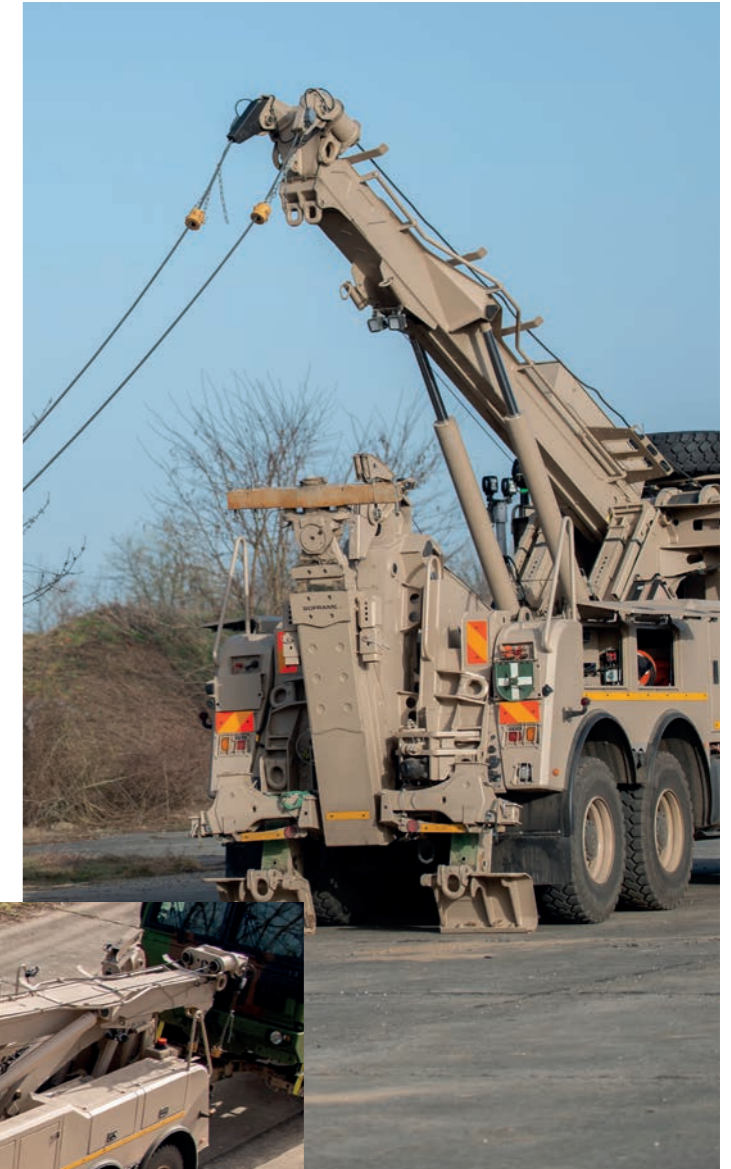




PRV

Protected Recovery Vehicle



© SOFRAME - 05/2022 - D19021 - GB - Non-contractual photos - All descriptions and characteristics are indicative and non-binding.

29 rue du 14 juillet
67980 - Hangenbieten
FRANCE
Tel. : +33 3 88 48 53 00
www.soframe.com

DEFENCE

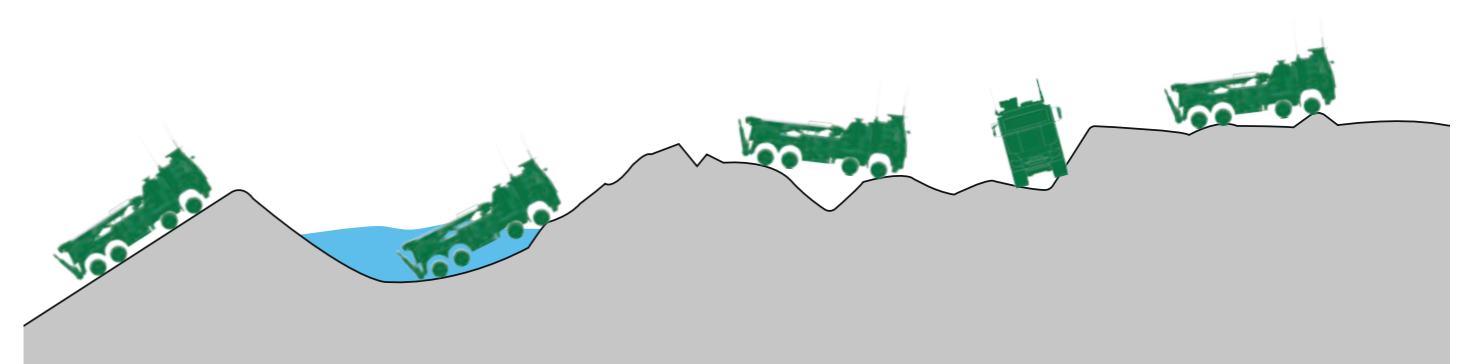
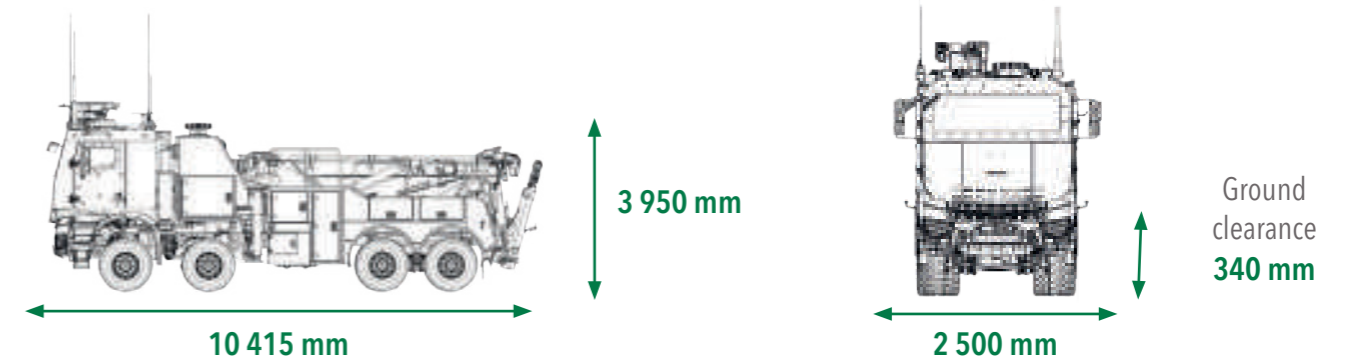


DEFENCE

EN



Technical characteristics



Gradeability 60 %	Slope 700 mm	Trench 700 mm	Side Slope 30 %	Step 400 mm
-----------------------------	------------------------	-------------------------	---------------------------	-----------------------

Front-line extraction

As the ultimate workhorse of front-line logistics support and equipment assistance, the extraction and recovery vehicle must be **reliable, robust, powerful, fast, modular, resilient and have extended road and all-terrain capabilities.**

The **PRV** was designed to meet these needs.

The **PRV** is an 8x8 vehicle with a **towing arm** and a **lifting/hauling** system.

It has an **armoured, pressurised** cab protecting the crew from high-intensity type threats.

The **PRV** vehicle is developed to operate on rough terrains.

The **PRV** recovery system is designed to recover vehicles with a **GVWR of up to 48 tons.**

High ballistic and mine protection

Maximum speed: 90 km/h

Pull and tow arm: 35.5 t

Lift and tow arm: 12.5 t

Hauling: 20 t

Self-haulage: 10 t

Main winch: cable length: 80 m

Crew: 3 people